

Hiking routes

LES CARROZ MAP



Office de Tourisme des Carroz
 9, place de l'ambiance
 74300 LES CARROZ D'ARACHES
 +33 04 50 90 00 04
 www.lescarroz.com

Office de Tourisme de Flaine
 Galerie Marchande Flaine-Forum
 74300 FLAINE
 +33 04 50 90 80 01 - www.flaine.com

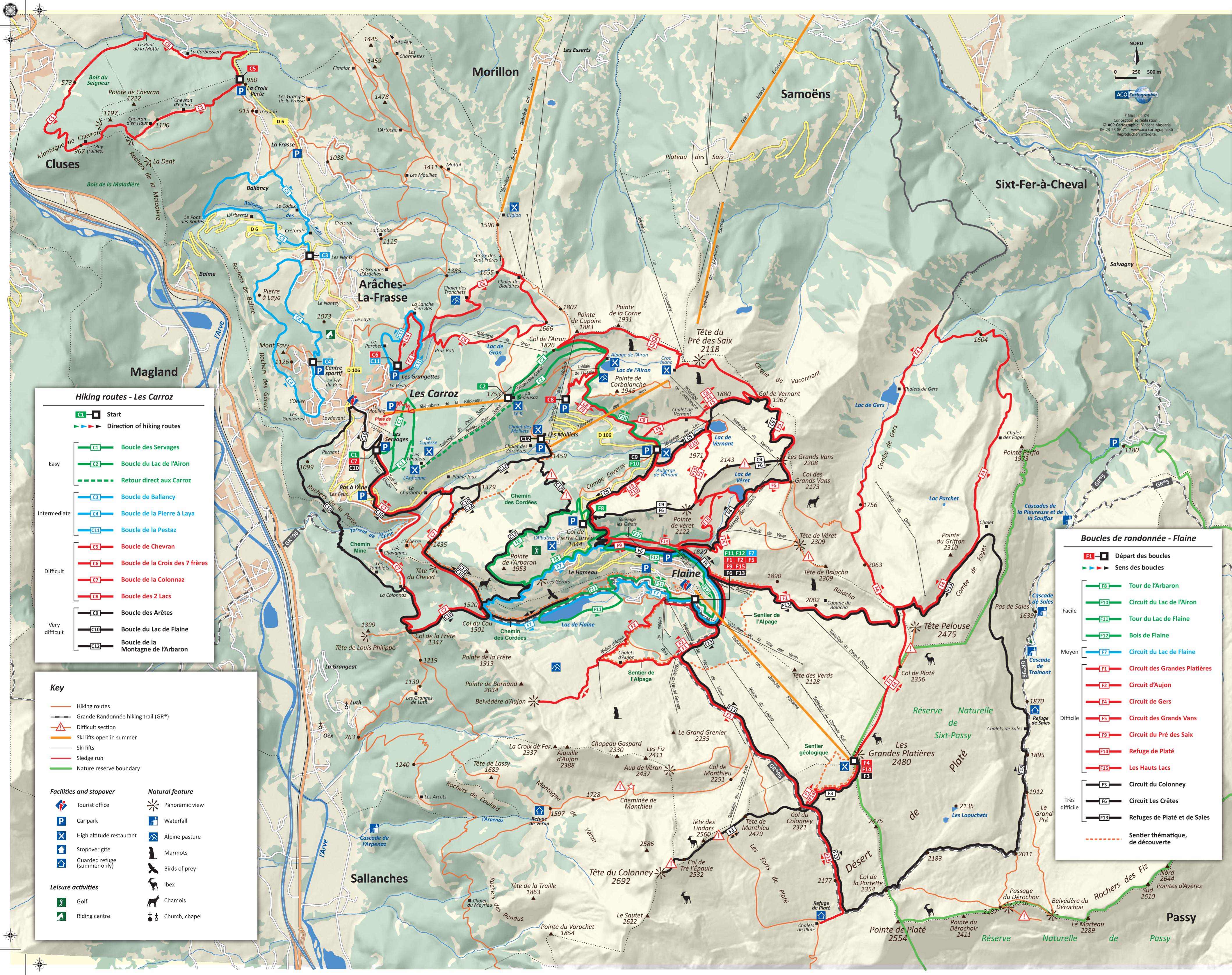
Information
 This map should not be used in winter, or when there is snow on the ground. To avoid ground erosion, please do not take shortcuts. Please keep noise levels to a minimum and ensure animals are on a lead so as not to disturb the fauna or cattle, or damage the fencing in any way. Protect nature: put your rubbish in a rubbish can and these routes are marked and maintained for your use, but they are just suggestions. We have not included everything on this map, please feel free to use your imagination to come up with other routes... or contact one of the mountain leaders on the list at the Tourist Office.

Safety advice
 Importantly, the weather can change quickly in the mountains. Please check the forecast before you leave (displayed in the Tourist Office or available from Météo France on +33 (0)899 71 02 72). Please make sure you take suitable clothing with you to protect you from the wind, rain, cold and sun. Do not overestimate your hiking level and ensure you have good, comfortable walking boots. Never head off on your own without telling someone where you are going.

In the event of a problem: dial 112 and try to give your most accurate location.

Respecting nature is protecting nature!
 Going off the marked paths and trails can disturb the fauna and damage the natural environment: destroying ground nests that may be filled with eggs waiting to hatch, causing soil erosion, biting of plants and tree roots... Anyone found violating these rules may be fined by the French National Forestry Commission or the Municipal Council. In order to protect the natural surroundings, which are home to many different species of animals, please:

- do not wander from the marked paths and trails, and do not take any shortcuts
- respect any sensitive zones marked on the ground and on the trail map
- keep dogs on a lead



Hiking routes - Les Carroz

Start: [Square with 'S']
 Direction of hiking routes: [Arrow]

Easy

- C1 Boucle des Servages
- C2 Boucle du Lac de l'Airon
- Retour direct aux Carroz

Intermediate

- C3 Boucle de Ballancy
- C4 Boucle de la Pierre à Laya
- C11 Boucle de la Pestaz

Difficult

- C5 Boucle de Chevrans
- C6 Boucle de la Croix des 7 frères
- C7 Boucle de la Colonnaz
- C8 Boucle des 2 Lacs

Very difficult

- C9 Boucle des Arêtes
- C10 Boucle du Lac de Flaine
- C12 Boucle de la Montagne de l'Arbaron

Key

- Hiking routes
- Grande Randonnée hiking trail (GR®)
- Difficult section
- Ski lifts open in summer
- Ski lifts
- Sledge run
- Nature reserve boundary

Facilities and stopover

- Tourist office
- Car park
- High altitude restaurant
- Stopover gîte
- Guarded refuge (summer only)

Natural feature

- Panoramic view
- Waterfall
- Alpine pasture
- Marmots
- Birds of prey
- Ibex
- Chamois
- Church, chapel

Leisure activities

- Golf
- Riding centre

Boucles de randonnée - Flaine

Départ des boucles: [Square with 'S']
 Sens des boucles: [Arrow]

Facile

- F8 Tour de l'Arbaron
- F10 Circuit du Lac de l'Airon
- F11 Tour du Lac de Flaine
- F12 Bois de Flaine

Moyen

- F7 Circuit du Lac de Flaine

Difficile

- F1 Circuit des Grandes Platières
- F2 Circuit d'Aujon
- F4 Circuit de Gers
- F5 Circuit des Grands Vans
- F9 Circuit du Pré des Saix
- F14 Refuge de Platé
- F15 Les Hauts Lacs

Très difficile

- F3 Circuit du Colonney
- F6 Circuit Les Crêtes
- F13 Refuges de Platé et de Sales

Sentier thématique, de découverte: [Dashed line]